

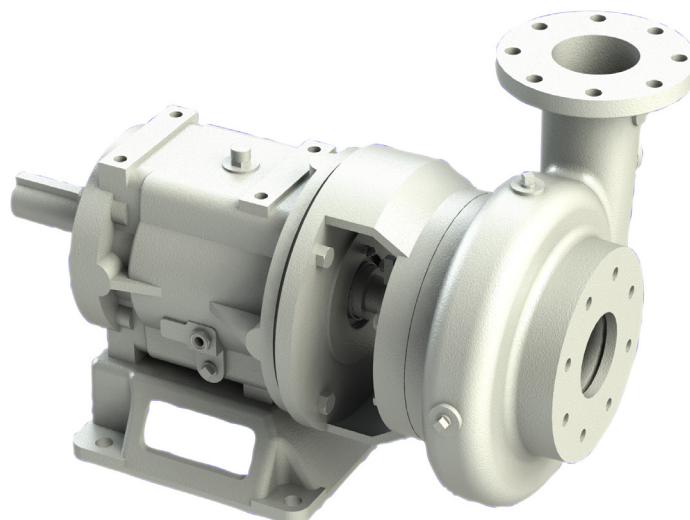


### AVAILABLE MOUNTING CONFIGURATIONS

6NHP-F16K FRAME MOUNT

### OPERATING LEVELS

<b>MIN FLOW</b>	300 GPM	68.14 m <sup>3</sup> /h
<b>MAX FLOW</b>	1700 GPM	386.11 m <sup>3</sup> /h
<b>DISCHARGE SIZE</b>	6"	152 mm
<b>SUCTION SIZE</b>	6"	152 mm
<b>SOLIDS HANDLING</b>	4"x6"	101.6mm x 152.4mm
<b>MAX SPEED</b>	1200 RPM	1200 RPM
<b>SHUT-OFF HEAD</b>	98'	29.87 m
<b>BEP HEAD</b>	55'	16.76 m
<b>BEP FLOW</b>	1200 GPM	272.55 m <sup>3</sup> /h
<b>BEP PERCENT</b>	73%	73%



A typical picture of the pump is shown. Please contact Cornell Pump Company for further details. All information is approximate and for general guidance only.

PARTS	STANDARD MATERIAL (FOOD PUMPS)
<b>WEAR RING</b>	CAST IRON, ASTM A48
<b>IMPELLER</b>	304 STAINLESS STEEL
<b>VOLUTE</b>	CAST IRON, ASTM A48
<b>SHAFT</b>	STRESSPROOF STEEL
<b>SHAFT SLEEVE</b>	303 STAINLESS STEEL
<b>SEAL HOUSING</b>	DUCTILE IRON, ASTM A536
<b>SEAL</b>	FOOD GRADE PACKING
<b>BEARING FRAME</b>	CAST IRON, ASTM A48

The 6NHP pump is designed with Cornell's renowned quality and durability. It features a 6" discharge and a 6" suction with an enclosed, single-port impeller. Cornell's patented Cycloseal® design is optional, with a Type 2 single mechanical seal with Buna-N elastomers, stainless steel hardware and tungsten carbide vs. silicon carbide seal faces for abrasion resistance. Also available with food-grade packing. Bearings are heavy-duty, oil or grease lubricated, deep groove ball bearings with a minimum of 50,000 hours bearing life.

- Single port impeller for handling whole or processed foods
- Available with Food grade packing (Standard) or Cycloseal
- Standard with all iron wet end and a 304SS impeller
- Optional Run-Dry lubrication system



AGRICULTURE



FOOD



INDUSTRIAL



MINING



MUNICIPAL



OIL & GAS



REFRIGERATION



RENTAL

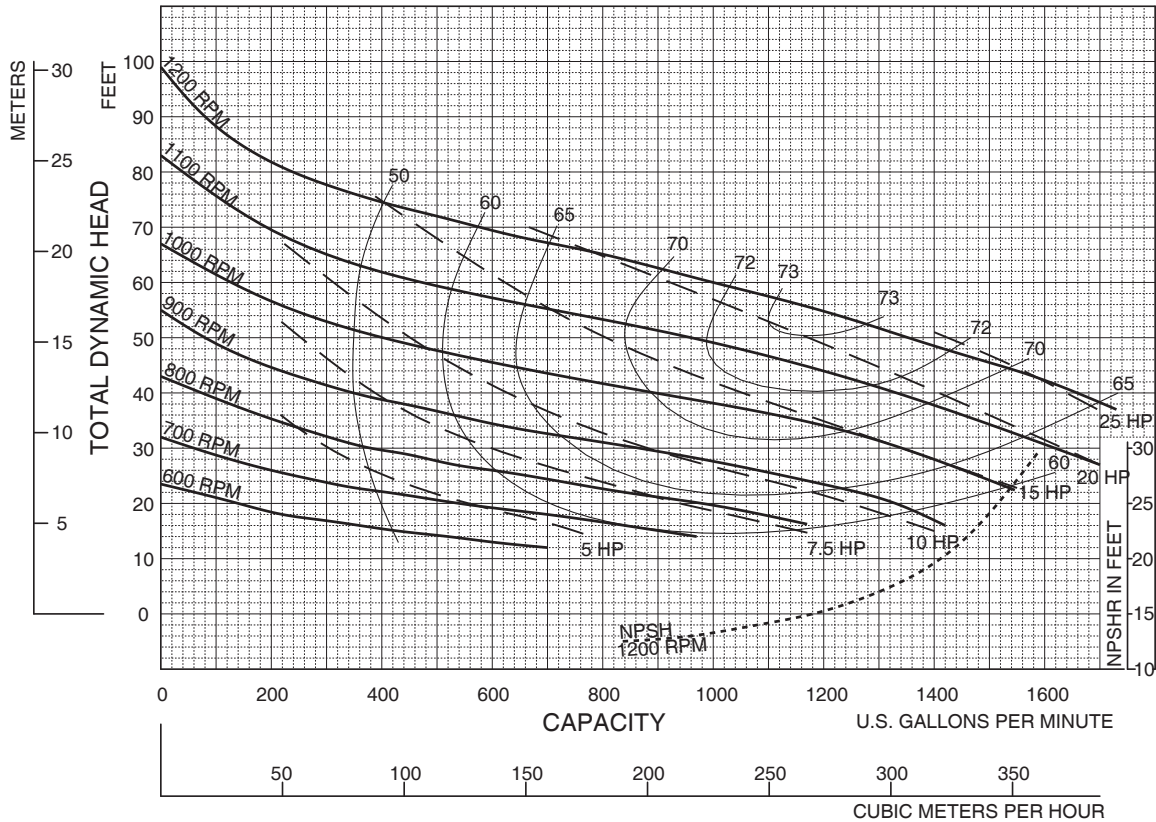
# 6NHP



Speed	Impeller Dia.	Style	Solids Dia.	N <sub>S</sub>	Suction	Discharge	No. vanes
VARIOUS	13.5"	ENCLOSED	4"x6"	2050	6"	6"	1

Feet x .305 = Meters  
 Inches x 25.4 = Millimeters  
 GPM x .227 = Cubic Meters/Hour  
 GPM x 3.785 = Liters/Minute  
 HP x .746 = KW

SINGLE VOLUTE MOUNTING CONFIG.: CC, VM, F, VF, EM, VC



Performances shown are for cool water, close-coupled electric configuration with Cyclo Seal.<sup>™</sup> Other mounting styles or liquids may require horsepower and/or performance adjustments.

NEW PAGE

6NHPVA



Cornell Pump Company • Portland, Oregon

6NHP - VARIOUS RPM

6/99