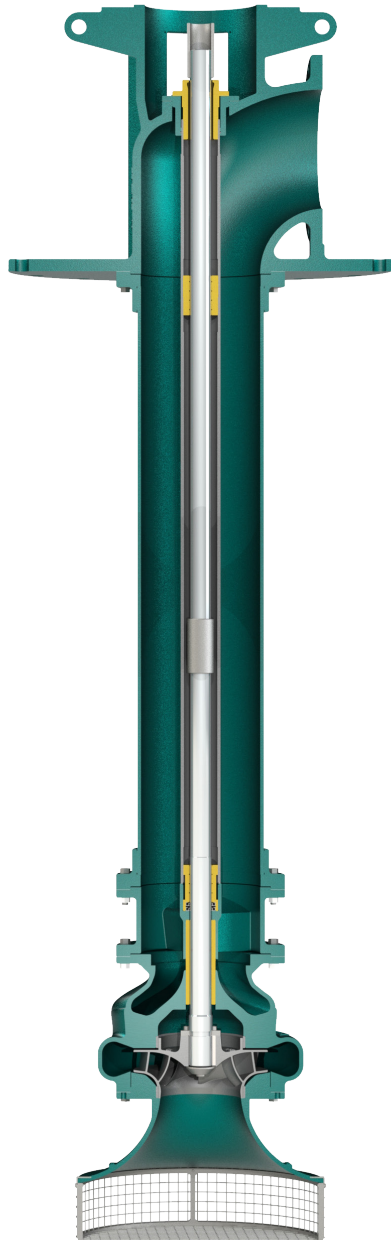




4RB-VT-ELS

ENCLOSED LINE SHAFT (ELS) - OIL LUBRICATED



SPECIFICATIONS		
MIN FLOW	280 GPM	63.6 m ³ /h
MAX FLOW	1400 GPM	318 m ³ /h
DISCHARGE SIZES	6", 8"	152.4 mm, 203.2 mm
SOLIDS HANDLING	.84"	21.34 mm
MAX SPEED	1800 RPM	
MAX PRESSURE	175 PSI	1206.6 kPa
SHUT-OFF HEAD	178'	54.3 m
BEP HEAD	147'	44.8 m
BEP FLOW	1020 GPM	231.7 m ³ /h
BEP	85%	
MAX. TOTAL PUMP LENGTH (TPL)	25'	7.6 m
BOWL DIAMETER	21.5"	546.1 mm
LUBRICATION TYPE	OIL LUBRICATED	
IMPELLER ATTACHMENT	LOCKSCREW, KEYED	
IMPELLER TYPE	ENCLOSED	
ROTATION	COUNTER-CLOCKWISE FROM DRIVE END	
STAGES	SINGLE	

The 4RB-VT-ELS pump is designed with Cornell's renowned quality and durability. It features a 6" or 8" discharge column pipe and head size, enclosed left-hand rotation impeller, epoxy-lined cast iron bowl, wear rings, suction bell, cast iron discharge head, industry-standard pump/column/head shafts and lineshaft couplings, lineshaft bearings, sleeve bearings, and optional basket strainer.

- High efficiencies due to spiral bowl construction
- Enclosed 316SS impeller
- Larger impeller diameters = higher head
- Fewer stages to replace and maintain
- No priming required
- Two-year warranty
- Wide flow range per model
- Fits standard VHS motors

A typical picture of the pump is shown. Please contact Cornell Pump Company for further details. All information is approximate and for general guidance only.



AGRICULTURE



FOOD



INDUSTRIAL



MINING



MUNICIPAL



OIL & GAS



REFRIGERATION



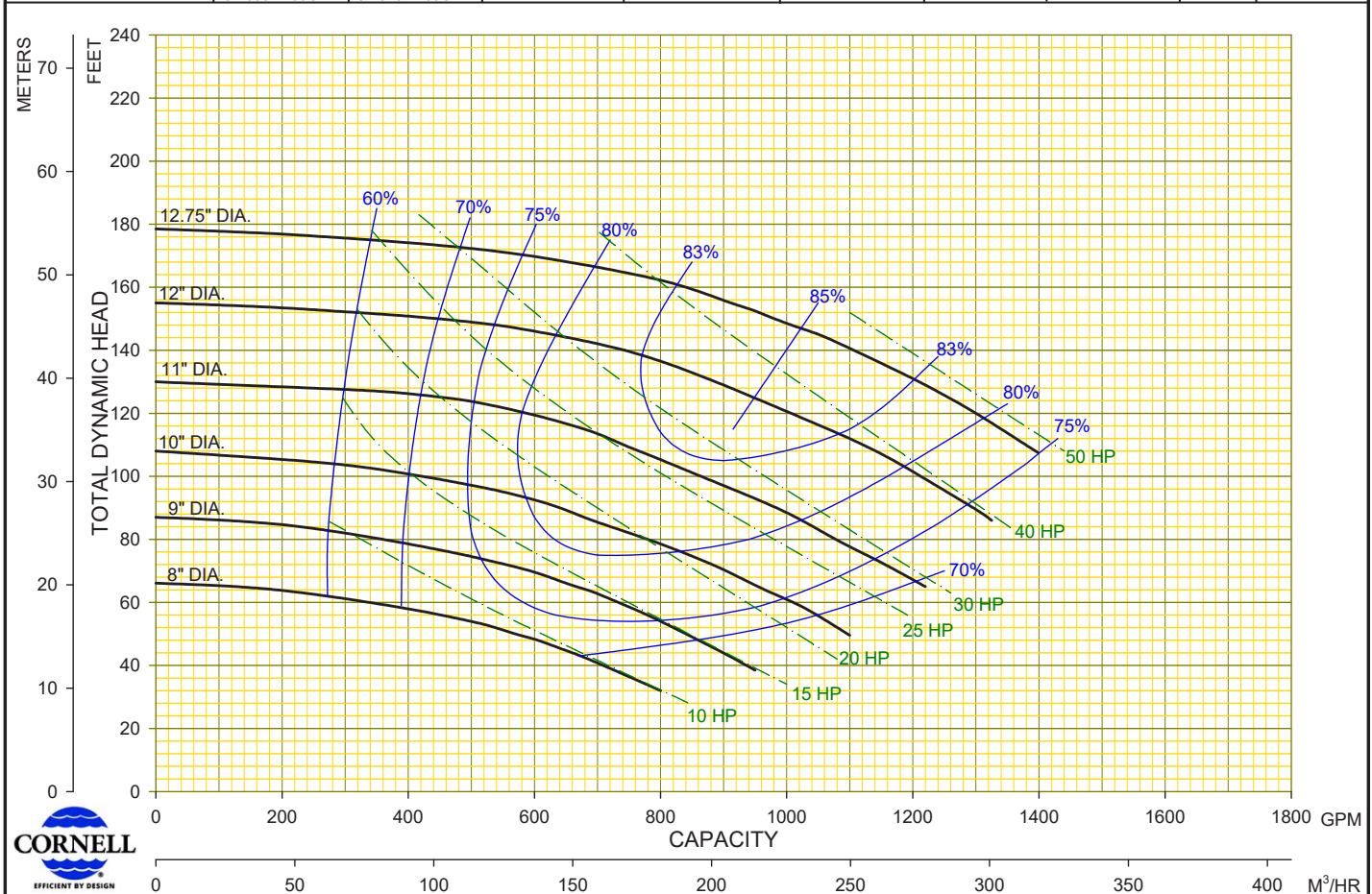
RENTAL



PARTS	SPECIFICATION
SUCTION STRAINER	304 SS OR GALVANIZED
SUCTION BELL	CAST IRON ASTM A48 CLASS 30
VOLUTE BOWL	CAST IRON ASTM A48 CLASS 30
BOWL COATING	3M SKOTCHKOTE FUSION BONDED EPOXY 134, INTERNAL SURFACES
WEAR RINGS	BRONZE SAE 660
IMPELLER	316 STAINLESS STEEL
DISCHARGE CASE	CAST IRON ASTM A48 CLASS 30

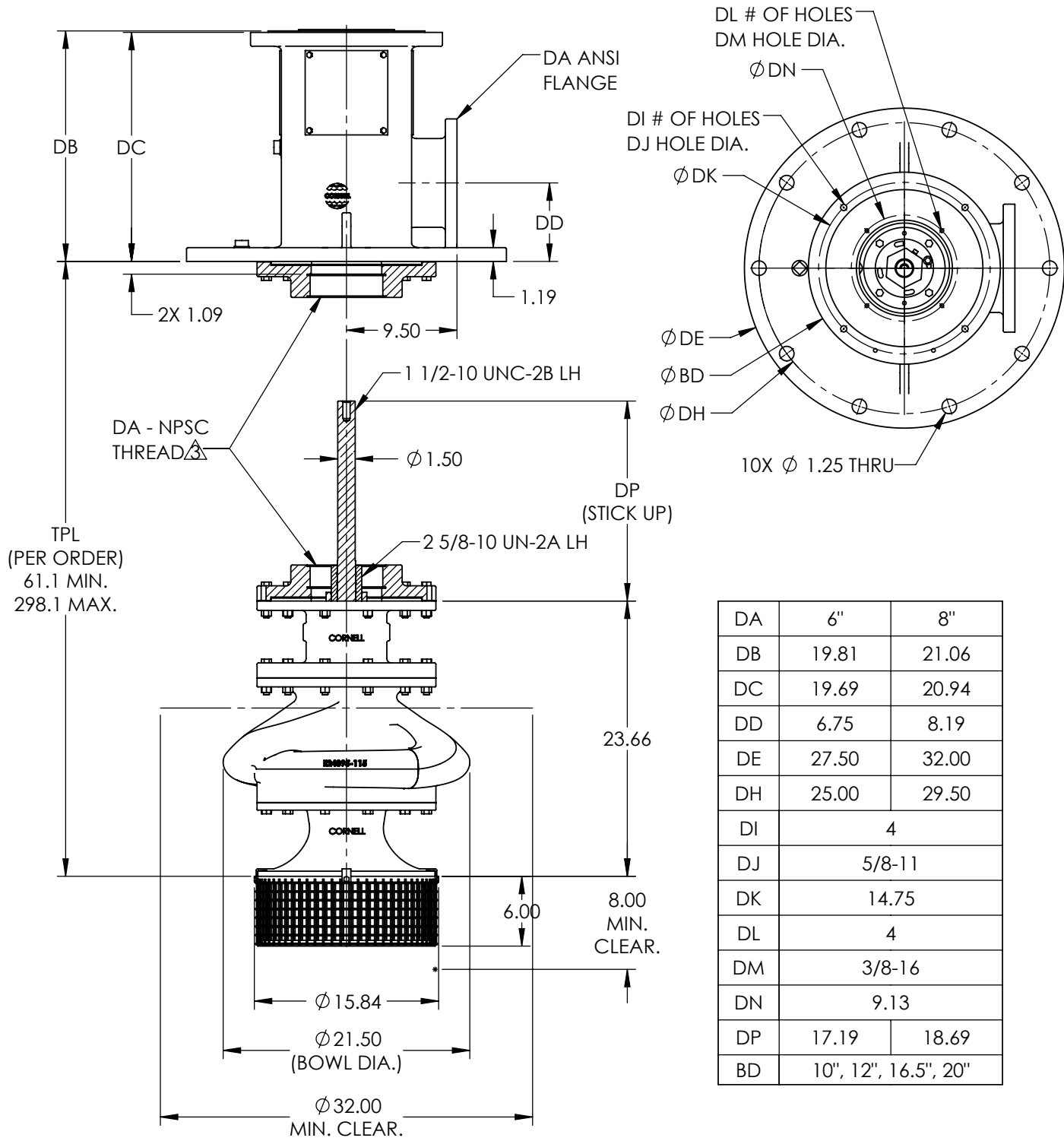
PARTS	SPECIFICATION
COLUMN ADAPTER	CAST IRON ASTM A48 CLASS 30
LINESHAFT & HEADSHAFT	416 STAINLESS STEEL
LINESHAFT COUPLING	304 STAINLESS STEEL
DISCHARGE HEAD	CAST IRON ASTM A48 CLASS 30
COLUMN PIPE & OIL TUBE	ASTM A53 STEEL
SLEEVE BEARING(S)	C89835 TIN BRONZE, LEAD-FREE
TUBE TENSION PLATE	CAST IRON ASTM A48 CLASS 30
TUBE TENSION NUT	BRONZE SAE 660

Discharge ELS	Discharge OLS	Speed	Impeller Dia.	Style	Bowl O.D.	Solids Dia.	N _s	No. Vanes
6": 280-900GPM 8": 500-1400GPM	6": 300-1000GPM 8": 540-1400GPM	1780 RPM	VARIOUS	ENCLOSED	21.5"	.84"	1345	7



Cornell Pump Company • Clackamas, Oregon	02	8/1/17	JG	MODEL : 4RB-VT TYPE : VERTICAL TURBINE	CURVE NO: 4RBVT18
	01	2/16/17	BE		

4RB-VT-ELS



DA	6"	8"
DB	19.81	21.06
DC	19.69	20.94
DD	6.75	8.19
DE	27.50	32.00
DH	25.00	29.50
DI	4	
DJ	5/8-11	
DK	14.75	
DL	4	
DM	3/8-16	
DN	9.13	
DP	17.19	18.69
BD	10", 12", 16.5", 20"	

- NOTES:
1. OVERALL DIMENSIONS CAN VARY ±.12 INCH
 2. DO NOT USE FOR CONSTRUCTION UNLESS CERTIFIED
 3. *NATIONAL PIPE STRAIGHT COUPLING THREAD, 8 THREADS PER INCH.
 4. COLUMN/SHAFTING WEIGHS APPROX. 28-38LB PER FOOT.



MARKET AND PRODUCT LINE



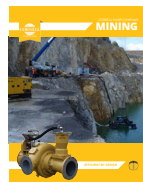
AGRICULTURE



FOOD PROCESS



INDUSTRIAL



MINING



MUNICIPAL



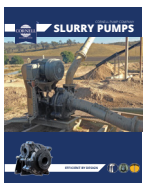
WATER TRANSFER



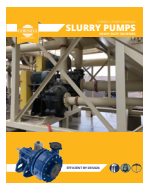
REFRIGERATION



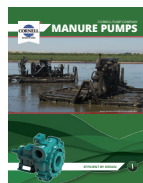
CONSTRUCTION



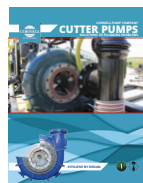
SLURRY



SLURRY SM



MANURE



CUTTERS



SELF PRIMING



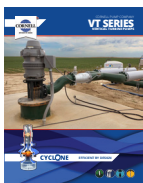
HIGH FLOW



MX SERIES



N SERIES



CYCLONE™



EDGE™



HYDRAULIC SUBS



IMMERSIBLE



CD4MCU



RUN-DRY™



PRIMING SYSTEMS



CYCLOSEAL®

Cycloseal® and Redi-Prime® are Registered Trademarks of Cornell Pump Company.

Cornell pumps and products are the subject of one or more of the following U.S. and foreign patents: 3,207,485; 3,282,226; 3,295,456; 3,301,191; 3,630,637; 3,663,117; 3,743,437; 4,335,886; 4,523,900; 5,489,187; 5,591,001; 6,074,554; 6,036,434; 6,079,958; 6,309,169; 2,320,742; 96/8140; 319,837; 918,534; 1,224,969; 2,232,735; 701,979 and are the subject of pending U.S. and foreign patent applications.

CORNELLPUMP.COM
©2019 CORNELL PUMP COMPANY



Cornell Pump Company
Clackamas, Oregon, USA
P: +1 (503) 653-0330
F: +1 (503) 653-0338

AUTHORIZED CORNELL PUMP DISTRIBUTOR