

3WHA-CC



AVAILABLE MOUNTING CONFIGURATIONS	
3WHA-CC CLOSE COUPLED	
3WHA-VM VERTICAL CLOSE-COUPLED	

OPERATING LEVELS		
MIN FLOW	80 GPM	18 m ³ /h
MAX FLOW	820 GPM	186 m ³ /h
DISCHARGE SIZE	3"	76 mm
SUCTION SIZE	4"	101 mm
SOLIDS HANDLING	.50"	13 mm
MAX SPEED	3525 RPM	3525 RPM
SHUT-OFF HEAD	232'	71 m
BEP HEAD	190'	58 m
BEP FLOW	635 GPM	144 m ³ /h
BEP PERCENT	83%	83%



A typical picture of the pump is shown. Please contact Cornell Pump Company for further details. All information is approximate and for general guidance only.

PARTS	CAST IRON BRONZE FITTED	ALL IRON (OPTIONAL)
WEAR RING	BRONZE SAE 660	CAST IRON ASTM A48 CL30
IMPELLER	CAST IRON ASTM A48 CL30	CAST IRON ASTM A48 CL30
VOLUTE	CAST IRON ASTM A48 CL30	CAST IRON ASTM A48 CL30
SHAFT	CARBON STEEL	CARBON STEEL
SHAFT SLEEVE	BRONZE SAE 660	303 STAINLESS STEEL
BACKPLATE	CAST IRON ASTM A48 CL30	CAST IRON ASTM A48 CL30
PACKING (STANDARD)	GRAPHITED ACRYLIC	GRAPHITED ACRYLIC
MECHANICAL SEAL (OPTIONAL)	T-1 OR T-2, BUNA, CARBON/CERAMIC	T-1 OR T-2, BUNA, CARBON/CERAMIC
MOTOR	OPEN DRIPPROOF - STD, TEFC & OTHERS - OPTIONAL	OPEN DRIPPROOF - STD, TEFC & OTHERS - OPTIONAL

The 3WHA general purpose pump is designed with Cornell's renowned quality and durability. It features a 3" discharge and a 4" suction, enclosed multi-vane impeller and flanged tangential single volute. Optional motors include TEFC and others.

- Standard cast iron bronze fitted construction (CI impeller)
- External hydraulic balance line
- Back pullout design
- Replaceable suction wear ring
- Replaceable shaft sleeve
- "Shower curtain shield" bearing protection
- High efficiency hydraulics
- Low operating costs
- Two year warranty
- Optional run-dry lubrication system
- Other mechanical seal (cycloseal) and material options available



AGRICULTURE



FOOD



INDUSTRIAL



MINING



MUNICIPAL



OIL & GAS



REFRIGERATION



RENTAL

3WHA-CC

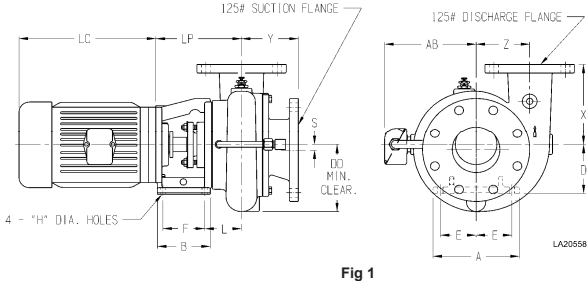


Fig 1

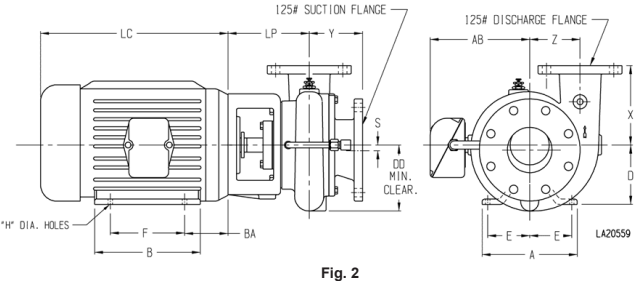


Fig 2

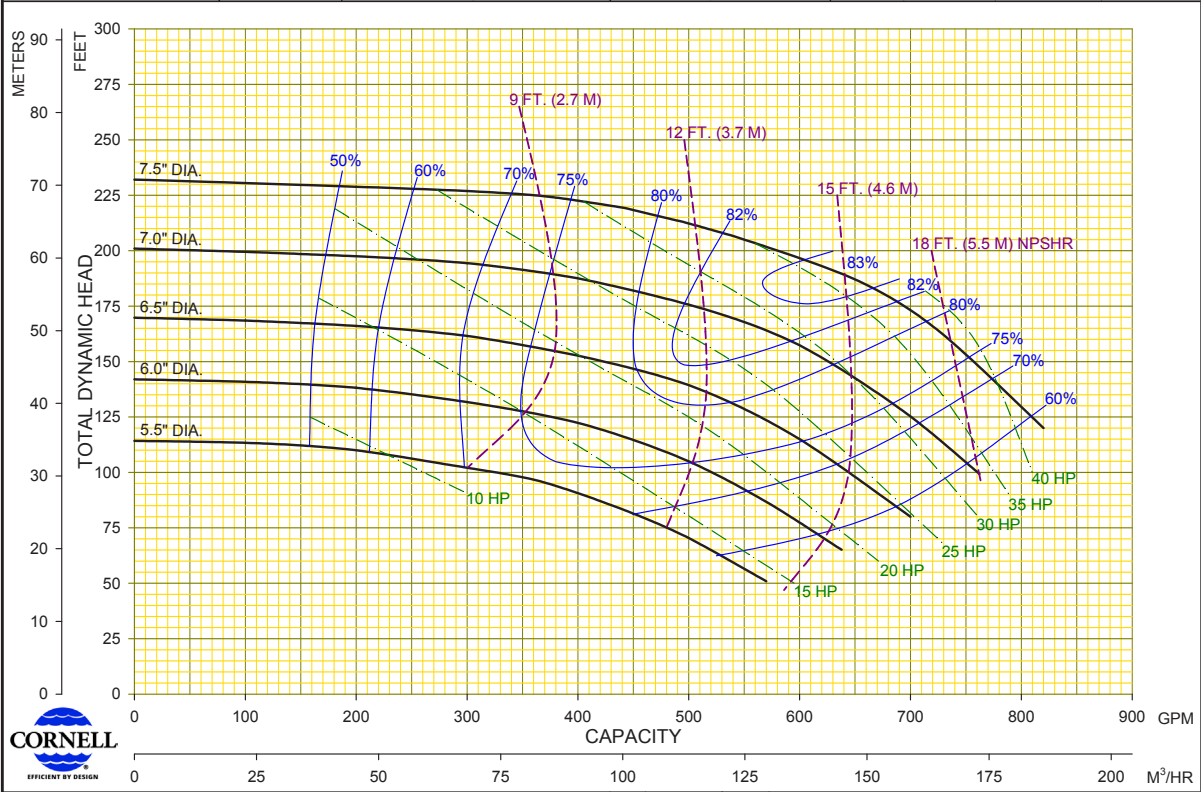
PUMP DIMENSIONS

MODEL	CONNECTION		DISCH. INCR.	AK DIM.	FIG.	DD	L	S	X	Y	Z	LP
	DISCH.	SUCT.										
3WH/A	3	4	90°	4.5	1	7.12	3.09	-	6	4.76	4.5	7.19
				8.5	2	7.12	-	-	6	4.76	4.5	8
				12.5	2	7.12	-	-	6	4.76	4.5	8

MOTOR DIMENSIONS

MOTOR FRAME	AK DIM.	A	B	D	E	F	H	AB	BA	LC
213-5	8.5	9.5	8	5.25	4.25	7	0.41	7.94	4.5	13.69
254-6	8.5	11.25	11.25	6.25	5	10	0.53	9.5	5	17.94
284-6	12.5	12.25	12.25	7	5.5	11	0.53	11.37	5	21.31

Performances shown are for S.G. 1.0 60°F water, close-coupled configuration. Other mounting styles or S.G. may require curve adjustments.	Speed	Impeller Dia.	Style	Volute	Solids Dia.	N _s	Suction	Discharge	No. Vanes
	3525 RPM	VARIOUS	ENCLOSED	SINGLE	.50"	1725	4"	3"	6



Cornell Pump Company • Clackamas, Oregon	01	03/02/16	FM	MODEL : 3WHA	CURVE NO.: 3WHA36
	00	03/19/04		TYPE : CLEAR LIQUID	